

CHOOSING THE RIGHT MACHINE

Over the past few months CSNA has researched the best value Reverse Vending Machine for our members. After our intensive research we have chosen to recommend Tomra to our members.

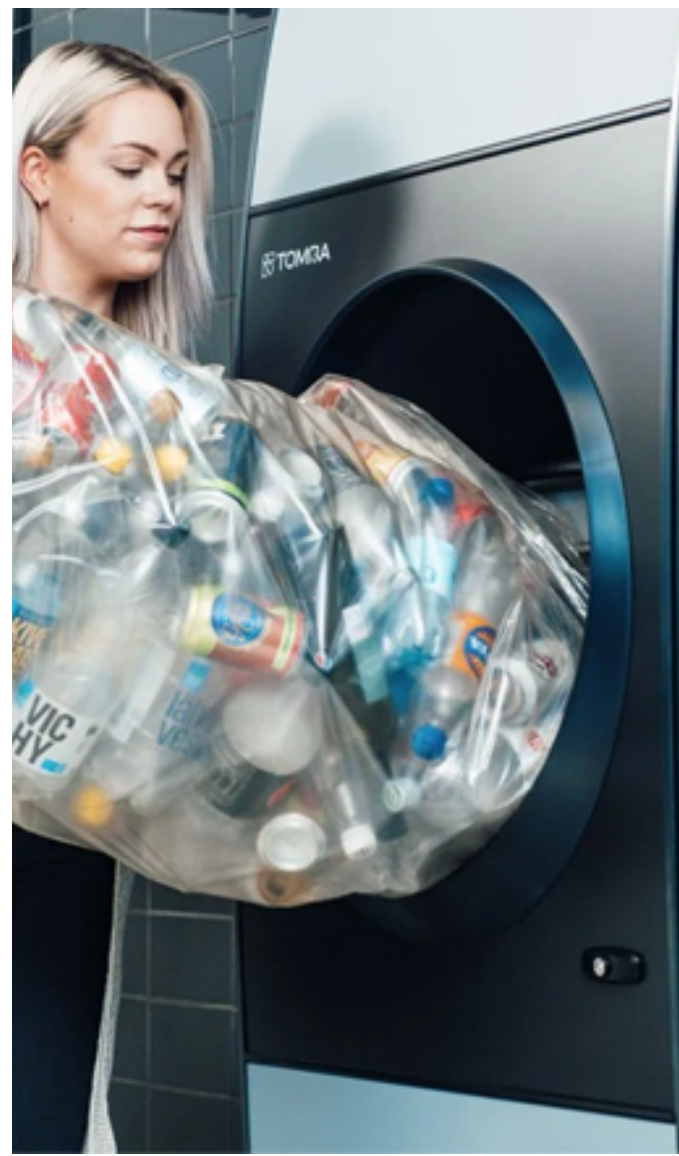


*No matter the **type, size, or needs** of your business, **TOMRA** has a reverse vending solution **for you**.*

We work with each customer to identify their perfect set up – from the smallest convenience store to the largest bottle depot. With cutting-edge technology, constant innovation, and flexible solutions, TOMRA's reverse vending machines make **bottle and can recycling work for you**.

TOMRA was founded in 1972, based on the design, manufacturing and sale of reverse vending machines (RVMs) for automated collection of used beverage containers. Today TOMRA provides solutions that enable the **circular economy** with advanced collection and sorting systems, and food processing by employing sensor-based sorting and grading technology.

Altogether TOMRA has approximately 105,000 installations in over 100 markets worldwide and had total revenues of about 12 billion NOK in 2022. TOMRA's geographic footprint covers all continents, and the solutions provided are increasingly relevant for serving **sustainable societies**.



TOMRA CAN OFFER 3 DIFFERENT TYPES OF RVM FOR YOUR STORE.

Tomra **B Series**

The high storage capacity and small footprint of this machine makes it an ideal choice for customers looking for a space-efficient and flexible solution for receiving low to medium volumes of containers.

Scan The QR Code For More Information



1890 MM

930 MM



**Tomra Reverse Vending Machines are compatible with all till systems*

Tomra **M1**

A seamless fit for your store. The smallest recycling solution on the market that can recognize, sort, and store glass, plastic, and aluminum containers. Designed to fit right in with your store's shelves, the TOMRA M1 requires just 0.61 sqm, making recycling possible in every store.

Scan The QR Code For More Information





Tomra **T70 Single and Dual**

Space is no barrier to making recycling work for your store. One square meter is all it takes to offer your customers a chance to recycle with you when you select the T70 Single. Or choose the T70 Dual to increase your storage capacity in less than twice the footprint.



For more information please contact
Andrew Boyle on 087-2177931



Scan The QR Code For
More Information